

Les Tons des Psaumes dans LCL

GROUPE 1.A:



(1)



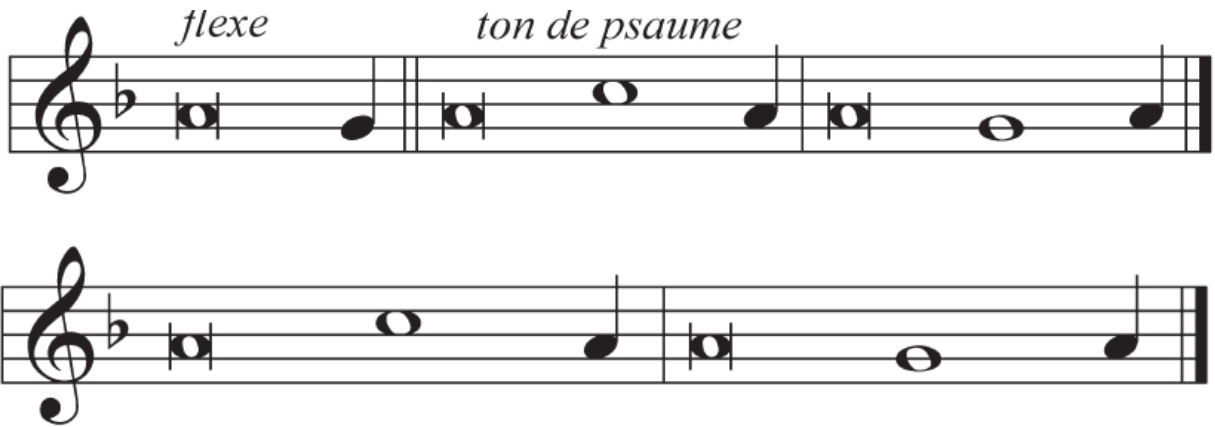
Psaumes 1+, 33, 85+

(2)



Psaumes 4+, 65+, 86+, 91+, 123+, 124, 145

(3)



Psaumes 8+,19+, 26, 50+, 67, 77+, 103+, 112+, 117, 118+, 132, 133

(4)



Psaumes 22+, 31+, 36+, 70, 143+

(5)



Psaume 119,1-16, 119,33-40, 119,105-112, 119,129-136, 119,145-152

GROUPE 1.B:



(6)

A

é - ter - nel est son a - mour!

B

strophes de 2 : on omet B

é - ter - nel est son a - mour!

C

é - ter - nel est son a - mour!

Psaume 136

GROUPE 2.A.1:





Psaumes 27+, 29+, 40+, 41, 71+, 92, 99+, 111+, 115, 128, 134, 138

(11)



Psaume 34

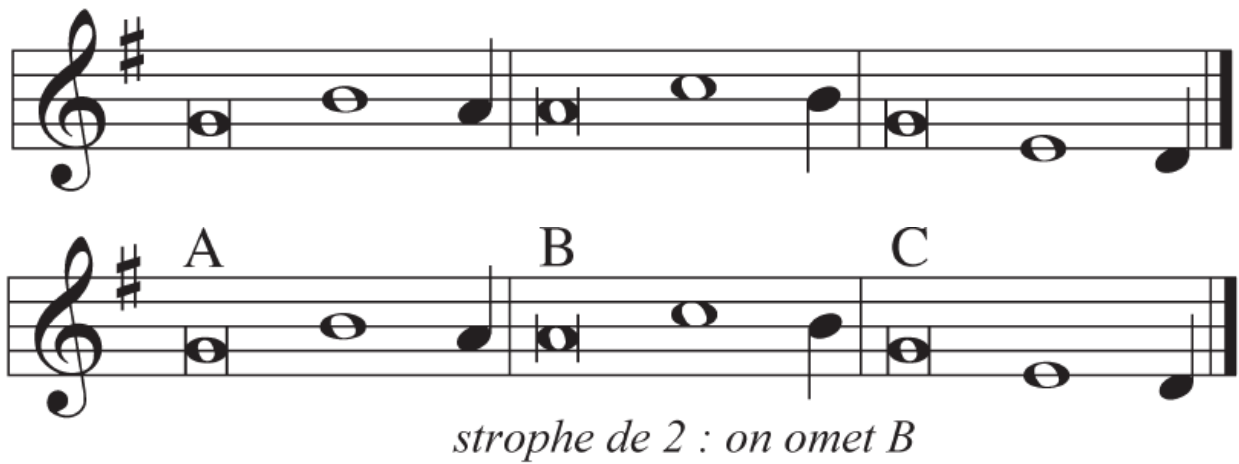
(12)



Psaumes 43, 66, 68,2-11, 146

GROUPE 2.A.2:

(13)



Two staves of musical notation in G major (one sharp). The first staff contains a sequence of notes: G4, A4, B4, C5, B4, A4, G4. The second staff contains the same sequence, with the first three notes labeled 'A', 'B', and 'C' respectively. Below the second staff, the text *strophe de 2 : on omet B* is written.

Psaumes 93, 96(2/3), 100

GROUPE 2.B:



A single staff of musical notation in D major (two sharps), showing the first two notes: D4 and E4.

(14)



A single staff of musical notation in D major (two sharps). The notes are: D4, E4, F#4, G4, A4, B4, C5, B4, A4, G4. The first two notes are labeled *flexe* and *ton de psaume* respectively.

Psaume 139

(15)



Psaume 141

GRUPE 2.C:



(16)



Psaumes 24+, 72, 80+, 89,2-6, 122+, 125+, 126

(17)

flexe ton de psaume

The image shows two staves of musical notation in G major (one sharp). The first staff begins with the lyrics "flexe ton de psaume". The notes on the first staff are G4, A4, B4, A4, G4, F#4, E4, D4. The second staff contains the same sequence of notes: G4, A4, B4, A4, G4, F#4, E4, D4.

Psaumes 84, 97+, 98, 110, 127, 147, 148